

Fixable with **M19 hole**



- 3 dials resettable combination (plastic dials)
- Additional Master Key function for emergency access
- Reset Code and Decode in front
- Plastic Lock housing
- Mostly for the private locks, with Scramble-Locking function



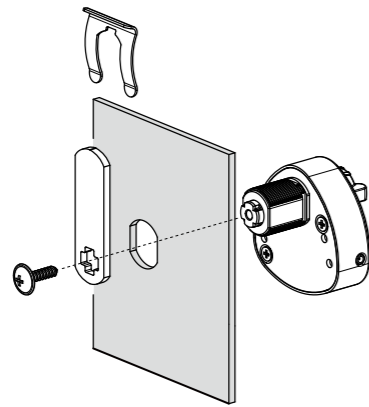
◀AL204



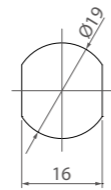
Easy to reset your code without tool

◀AL204P

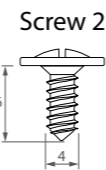
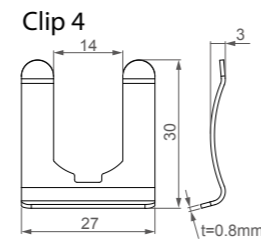
Installation



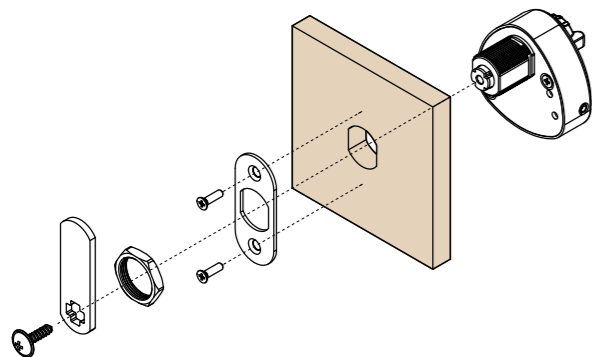
Panel thickness: 0.8-1mm
drilling template for metal panel:



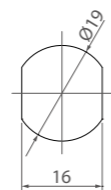
Accessories



Installation

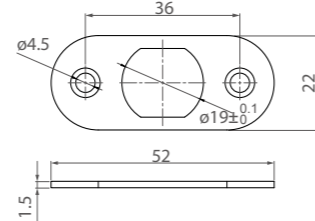


Panel thickness: <14mm, <29mm
drilling template for wooden panel:

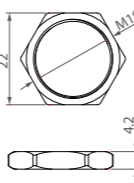


Accessories

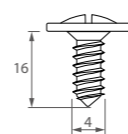
Washer 3 (optional)



Hex nut 1

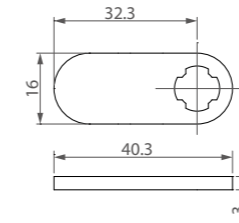
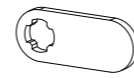


Screw 2

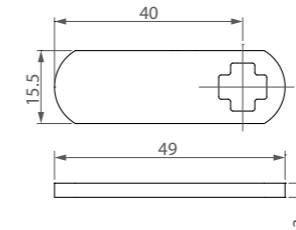
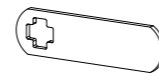


Cam Options

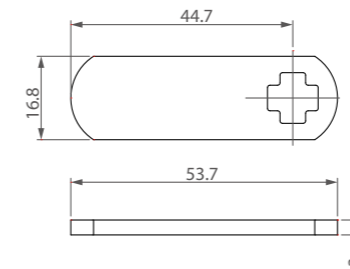
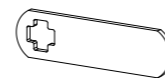
Straight Cam 1



Straight Cam 2

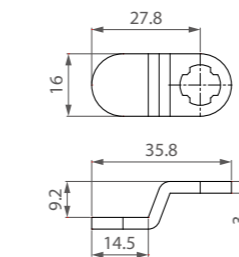


Straight Cam 13



Cam Options

Crank Cam 1



Crank Cam 2

