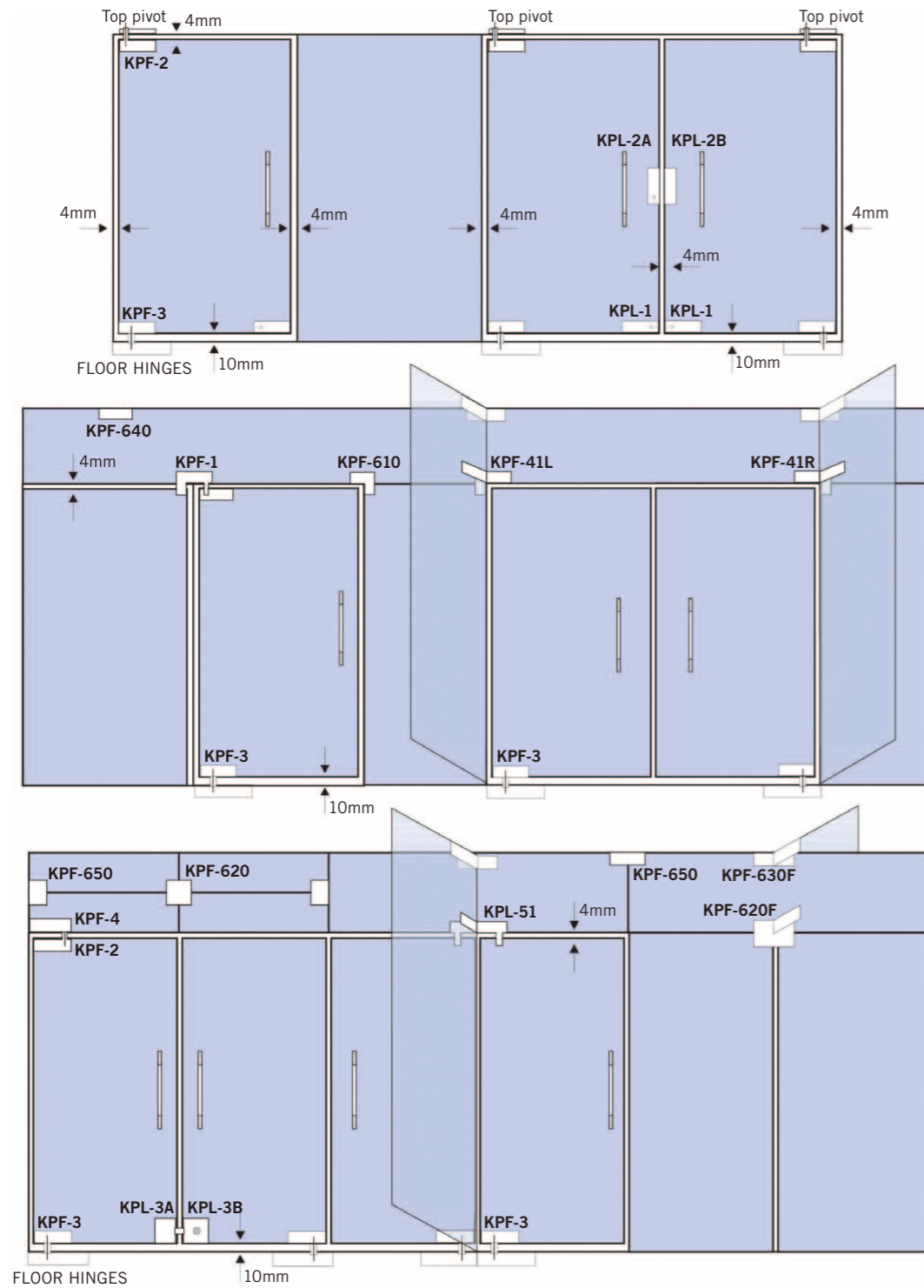
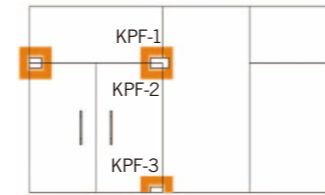


PATCH FITTING APPLICATIONS FOR FRAMELESS GLASS DOORS & TEMPERED GLASS ASSEMBLIES

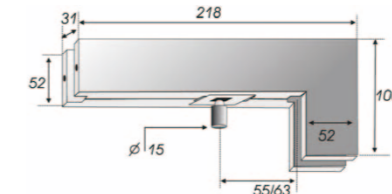


NN PATCH FITTING / PATCH LOCK

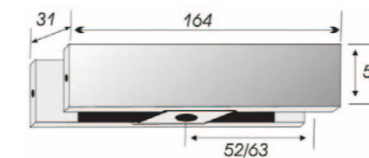
PATCH FITTING



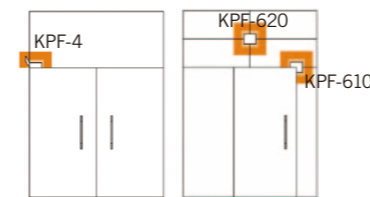
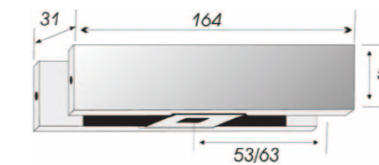
KPF-1 CORNER PATCH



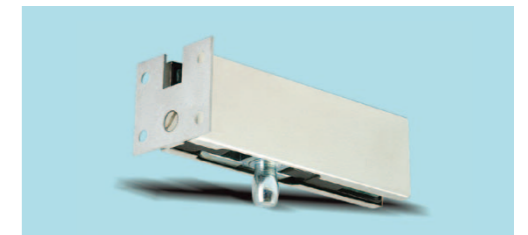
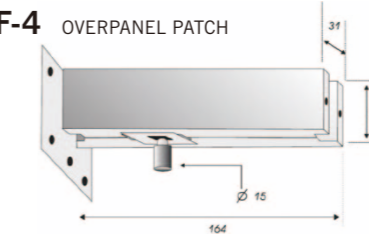
KPF-2 TOP PATCH



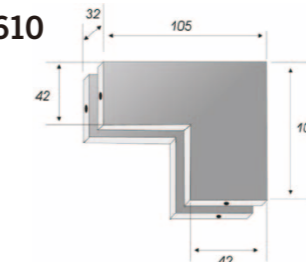
KPF-3 BOTTOM PATCH



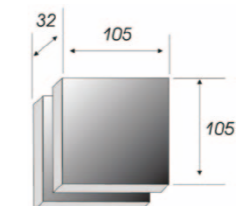
KPF-4 OVERPANEL PATCH



KPF-610

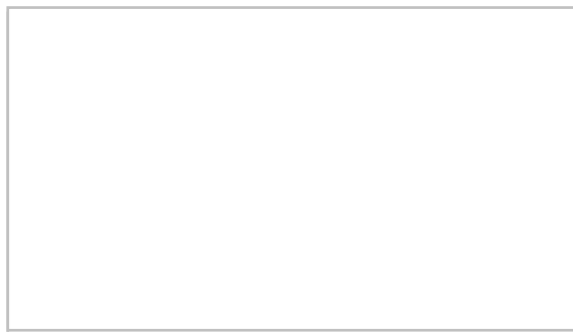


KPF-620



KENWA CO., LTD.

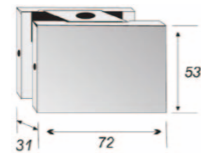
DISTRIBUTED BY



PATCH FITTING



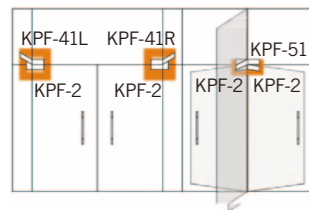
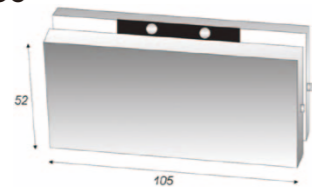
KPF-640
CONNECTOR PATCH



KPF-650
CONNECTOR PATCH - TWO GLASSES

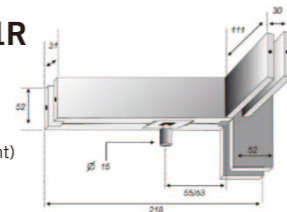


KPF-660



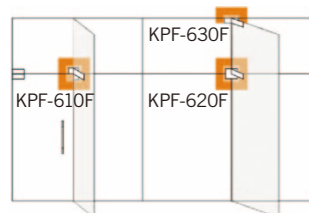
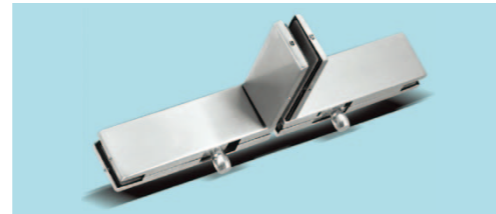
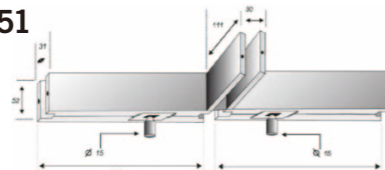
KPF-41L/41R
CORNER PATCH

Transom side & interior fin link patch with pivot (Left / Right)

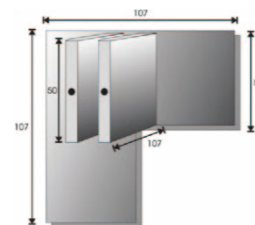


KPF-51

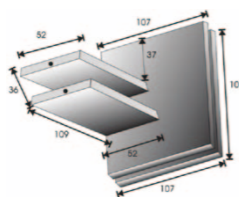
Double pivot Transom panel patch with fin holder for centre hung doors.



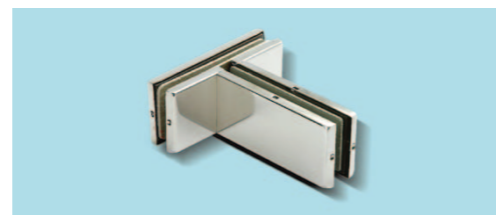
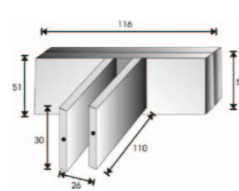
KPF-610F



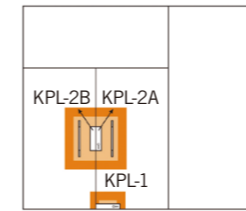
KPF-620F



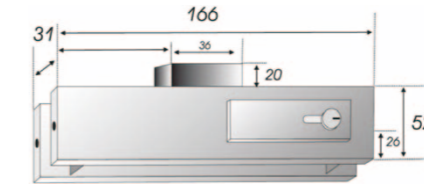
KPF-630F



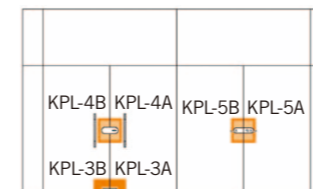
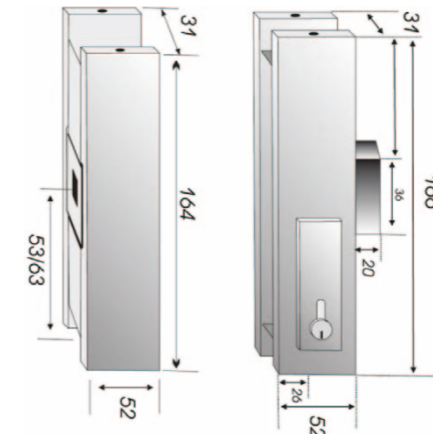
PATCH LOCK



KPL-1 PATCH LOCK

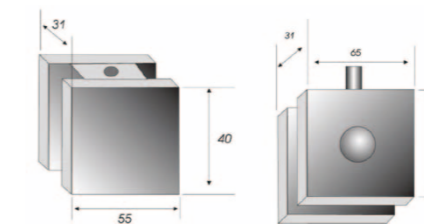


KPL-2A, 2B CENTER LOCK

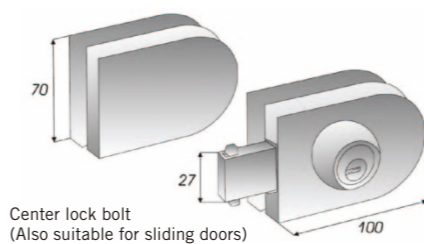


KPL-3A, 3B

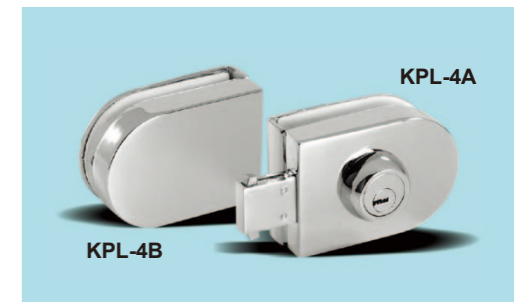
TURN KNOB LOCK & STRIKE BOX



KPL-4A, 4B CENTER LOCK



Center lock bolt (Also suitable for sliding doors)



KPL-5A, 5B CENTER LOCK WITH HANDLE

